

# Crisis Identification Analysis & Mitigation (CIAM)



## Introduction of Crisis Identification, Analysis, & Mitigation (CIAM)

Axcellent solutions has realized that software and services need to be redefined in order to be more effective as the world evolves. Based on our observations, expertise & consultations with industry experts, we have devised a unique delivery model that is oriented directly to Crisis. Whether it is a technological, financial/business, natural or men-made crisis, we can provide a customized solution that will either avoid the Crisis before it strikes or avert it proactively. We have developed a set of analytical tools with our unique three-step process to rate, analysis, and mitigate the Crisis.

We currently serve three areas under this model:

- Data Growth Management
- Potable Water Management
- Air Quality Management

Additionally, We are working with industry experts to expand our services portfolio to include areas such as epidemic management and traffic congestion management.

- *ADT (Application-Independent Deletion Toolkit (ADT))*
- *Crisis Sensitivity Index (CSI)*

## About US

We are revolutionizing how services are designed and delivered around Crisis Oriented Approach (COA). We have tools, Panel of experts, distilled experience and importantly, objective to guide in the right direction. Crisis Identification Analysis and Mitigation (CIAM) is a novel concept that blends a careful combination of technology and executive consulting. This assures a win-win scenario for everyone. We are extending our collective knowledge where its application can directly benefit human race in fight against Crisis, that is endangering its growth and challenges its existence.

Our core belief rests on following three core areas:

- Integrity
- Transparency
- Employee Centric approach

We have the plan! Let's join hands to review and avert any Crisis before it becomes unmanageable.

We are on standby - [info@axcellent.net](mailto:info@axcellent.net)

## Why Choose Us

- Premier consulting firm
- 14 years of specialized experience
- Resolute and Unparallel Commitment



+1 (732) 588-0391



[info@axcellent.net](mailto:info@axcellent.net)



[www.axcellent.net](http://www.axcellent.net)

## Data Growth Management

According to a recent study about ever-growing datasphere, the collective world's data doubling every 18 months. This astronomical growth compounds the responsibility of data stewards to secure the data. The costs of storing expired data is broadly classified into two major categories.



### Tangible costs

- Progressive increase of storage cost
- Personnel cost for managing & securing the data

### Intangible costs

- Damage to business reputation in case of data compromise
- Continued financial commitment that is not required by business /legal or audit perspectives. Opportunity cost of embracing of new technology.

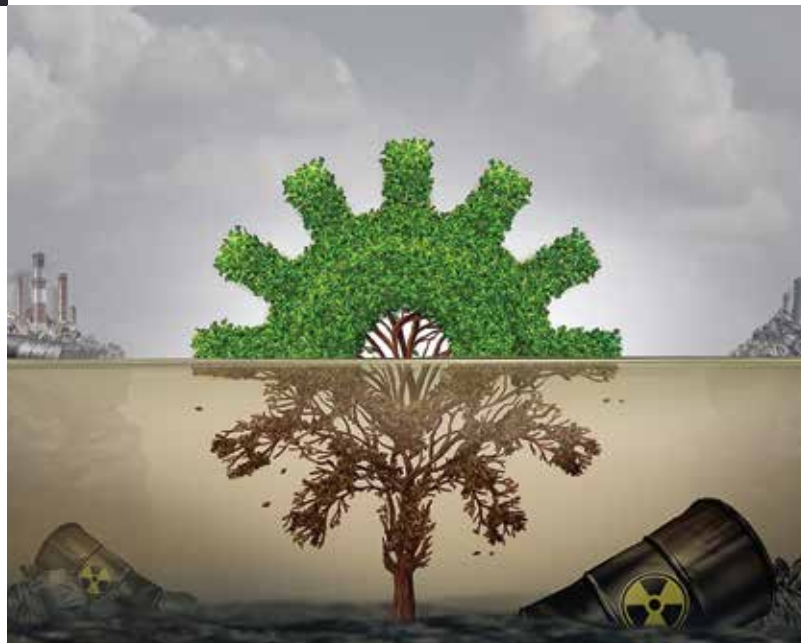
The astronomical data growth is experienced across all industries, which requires careful data archiving/ILM and legacy system data retirement – to limit your liability.

*We can review your complex web of IT applications and provide a solution to archive or delete the data/app while ensuring continued regulatory compliance.*

## Potable Water Management

Did you know that more than 1.2 billion people lack access to clean drinking water? Imagine a scenario of a big city running out of potable water in 2025 and the amount of socio-economic stress created as a reason of that! The increased urbanization, agriculture/commercial usage and population growth has put immense pressure on this basic and life sustaining commodity. Our approach is simple – partner with government or local agency to find a suitable technological partner; develop a resolution plan; monitor the implementation; and assure a sustainable solution. We have partnered with industry experts (technology/engineering, financial, government, etc.) for a timely and cost-effective resolution of the crisis.

*We offer services such as, Capacity planning, Implementation Planning & Monitoring, Impact Analysis, and Financial planning to combat the crisis.*



## Air Quality Management

Factors such as, deforestation, increase travelling requirements, industrial fumes and higher construction activity has deteriorated air quality to an unsustainable level in many parts of the world. According to WHO report 2014, around 7 million premature deaths annually linked to air pollution - one in eight of total global deaths. Unless serious, resolute and coordinated actions are taken to improve air quality, we will face dire consequence of air pollution across the globe. We broadly classify and serve the following two categories to fight the crisis:

### Avoidance strategy

### Reactive strategy

*Please contact us to learn more on how can we help improve air quality standard through conventional and non-conventional ways.*

